



# VLXS Series Low-Rise Pad Lifts

7,000 - 10,000 lbs. QUICK SERVICE LIFTS



Shown: VLXS10  
10,000 lbs. capacity  
low-rise lift

## Increasing Productivity with Rotary Lift

The VLXS10 is your solution for quick service operation on today's passenger cars and trucks up to 10,000 lbs. Tire and brake work can now be performed on a wider variety of vehicles, thanks to the lift's pads, adapters, wider drive-over capability, and increased lifting capacity.

The pad and adapter combinations allow lifting of uni-body and frame contact undercarriages — reaching recommended manufacturers pick-up points on most vehicles on the road today. The VLXS10 has ramps and side drive-over areas to accommodate wider wheelbase vehicles.



Shown: VLXS10  
10,000 lbs. capacity  
low-rise lift

**The World's Most Trusted Lift™**  
[www.rotarylif.com](http://www.rotarylif.com)

# VLXS Series Low-Rise Pad Lifts



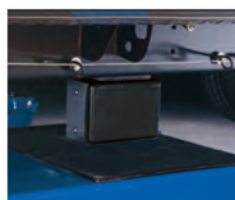
Shown: VLXS7  
7,000 lbs. capacity  
low-rise lift

## FEATURES:

- Drive-over ramps and side rails provide the width to support wider vehicles during approach.
- Dual lifting cylinders provide plenty of power to lift vehicles to capacity.
- Includes four heat-resistant non-slip pads which provide a great contact surface for adapters or vehicle pick-up points.
- 7,000 and 10,000 lbs. capacity models are available.

## VLXS10 Adapters

The three-position adapters have rubber contact pads on three sides increasing the positioning capabilities. The height added by these adapters creates lift versatility.



Shown: three-position adapter in mid-step



Lo: 4 5/16"

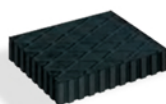


Mid: 6 5/16"



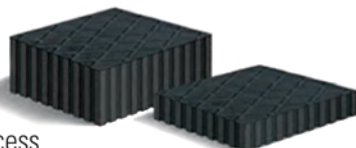
High: 8 9/16"

The VLXS10 also comes with a set of four 1 1/2" rubber block adapters for low-profile vehicles.



## VLXS7 Adapters

The 7,000 lb. capacity low-rise lift comes standard with a set of four each rubber blocks for quick access to lower profile and unibody frame vehicles. Blocks are 1 1/2" and 3" in height.

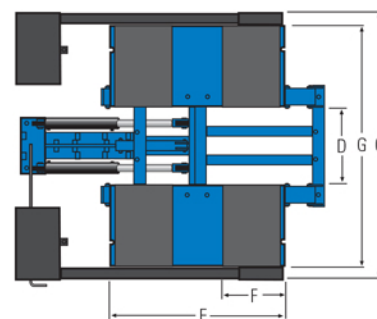
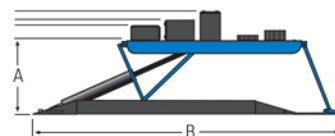


Shown: 1 1/2" and 3" rubber blocks for VLXS7

## Specifications

Model:	VLXS10	VLXS7
Rise High Step/Tall Pad	30 5/16" (770mm)	24 3/4" (629mm)
Rise Mid Step	28 1/16" (713mm)	N/A
A. Rise Low Step	26 1/16" (662mm)	N/A
Rise Short Pad	23 1/4" (587mm)	23 1/4" (587mm)
Rise Flat	21 3/4" (552mm)	21 3/4" (552mm)
B. Length Overall	90 1/2" (2299mm)	90 1/2" (2299mm)
C. Width Overall	78 1/2" (1994mm)	78 1/2" (1994mm)
D. Width Between Platforms	22 3/4" (578mm)	22 3/4" (578mm)
E. Length of Platform	51 1/4" (1299mm)	51 1/4" (1299mm)
F. Length of Pad	17" (432mm)	17" (432mm)
G. Outside Width Of Platforms	70 3/4" (1797mm)	70 3/4" (1797mm)
Horizontal Movement (during rise)	16" (406mm)	16" (406mm)
Collapsed Height	4" (102mm)	4" (102mm)
Locking Leg Heights	13 3/8" (340mm) 17 3/8" (441mm) 21 3/8" (543mm)	13 3/8" (340mm) 17 3/8" (441mm) 21 3/8" (543mm)
Lifting Capacity	10,000 lbs. (4536kg)	7,000 lbs. (3175kg)
Voltage Single Phase	115v	115v
Time of Full Rise	40 seconds	40 seconds

Lifts are available in blue and red only.  
Ceiling height required equals rise plus height of tallest vehicle.



**UNITED**  
**AUTOMOTIVE SOLUTIONS**  
Your automotive solutions partner



Lit# VLXS\_LowRise\_Brochure\_2011.06 (Supersedes Lit# VLXS\_Series\_2010.12)  
©2011 VEHICLE SERVICE GROUP™. Printed in U.S.A., All Rights Reserved.  
Unless otherwise indicated, Rotary Lift®, VEHICLE SERVICE GROUP™, DOVER and all other trademarks are property of Dover Corporation and its affiliates.

FIND US ON



Contract Holder  
FSS Contract GS07F8963D

